

Formulate Essential 10' Horizontal Curve

FMLT-ESS-H10-02

Formulate™ Essential 10ft displays have customary frame features, are portable and come in Straight, Vertical Curved, Horizontal Curved and Serpentine Curved options. The economy aluminum tube frame features bungee cords, rounded corners and comes with a one year limited warranty. Simply pull the pillowcase fabric graphic over the frame and zip. All displays come with a canvas carry bag.



features and benefits:

- Economy aluminum tube frame features bungee cords and rounded corners
- Easy to store and ship
- Quick to set up
- Kit includes: one frame, pillowcase zipper fabric graphic and canvas carry bag
- One year limited hardware warranty against manufacturer defects

dimensions:

Hardware

Assembled unit:
118.5" w x 89.5" h x 18.7" d
3010mm(w) x 2273mm(h) x 475mm(d)

Approximate weight:
12 lbs / 5.4 kg

Graphic

Refer to related graphic template for more information.

Visit:
www.exhibitors-handbook.com/graphic-templates

Shipping

Shipping dimensions:
Cardboard Box
39.5" l x 13.5" w x 8.5" h
1003mm(l) x 343mm(w) x 216mm(h)

Approximate total shipping weight:
15 lbs / 7 kg

additional information:

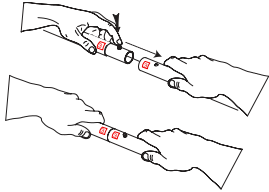
Graphic material:
dye-sublimation zipper pillowcase fabric

We are continually improving and modifying our product range and reserve the right to vary the specifications without prior notice. All dimensions and weights quoted are approximate and we accept no responsibility for variance. E&OE. See Graphic Templates for graphic bleed specifications.

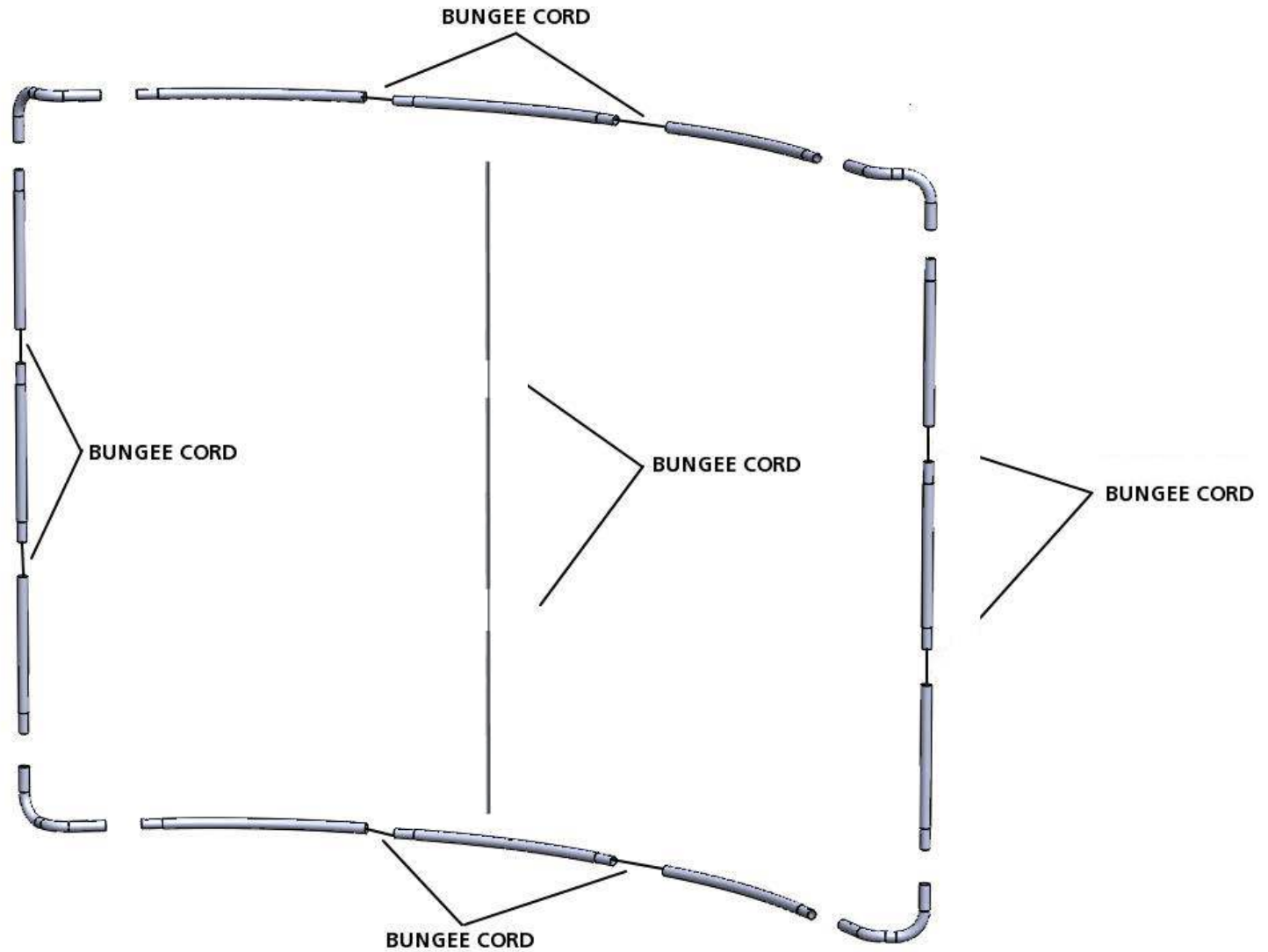
Assembly:

Assemble unit by laying tubes flat on the floor. Connect the bungee tube rails by pressing the push snap buttons in and sliding over (see drawing below) following the number labels listed, T1 to T1, T2 to T2 and so on.

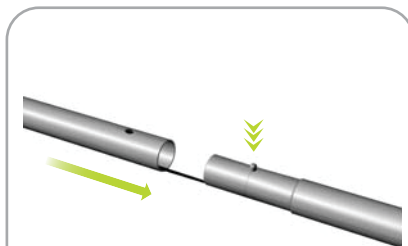
TUBE CONNECTION



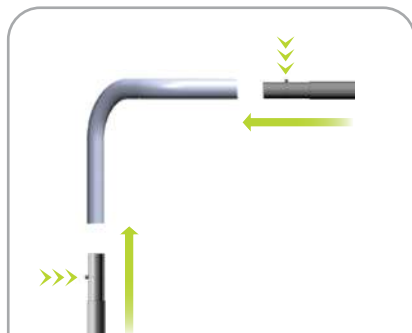
CONNECT TUBE BY MATCHING
NUMBER TO NUMBER, PRESSING
PUSH PIN BUTTON AND SLIDING OVER



STEP 1: ASSEMBLE FRAME



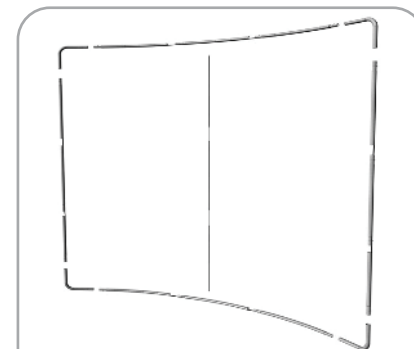
Connect bungee tubes by lining up holes with snap buttons



Connect corners of frame by lining up holes with snap buttons

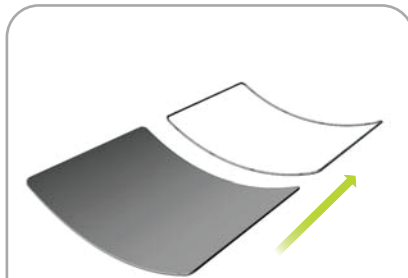


Place the center stability pole in the holes at the top and bottom



Frame assembly is complete once all sides are connected

STEP 2: ATTACH GRAPHIC



Slide graphic over top of frame



Zip graphic closed along side of frame



Backwall is assembled.